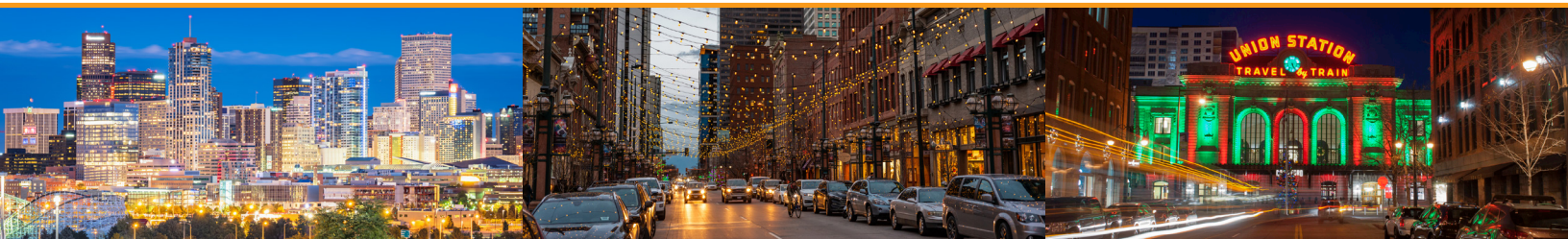


LOCATION OVERVIEW

DENVER, COLORADO

1614 15th Street, Suite #100 Denver, CO, 80202



L&E's Denver facility is a 40-minute drive from Denver International Airport (DIA) located in downtown Denver. This facility has three suites and a sensory room, which include the following amenities:

- A sensory and testing facility for traditional taste tests and CLT's
- Equipped with both consumer and commercial kitchens as well as break-out focus group rooms, it's the ideal space for testing both qual and quant.

FACILITY ROOMS

| Room | Dimensions | Maximum Conference Capacity | Maximum Viewing Capacity |
|--------------|---------------|-----------------------------|--------------------------|
| Sensory | 63' x 20' | 24 | 15 |
| Mile High | 18.5' x 18.5' | 16 | 12 |
| Pikes Peak | 30' x 17' | 18 | 12 |
| Breckenridge | 20' x 12' | 9 | 10 |
| Vail | 20' x 12' | 9 | 10 |

FACILITY FEATURES

- 1-on-1 Room
- 1-on-1 Observation
- Air Conditioning
- Car Parking
- Catering Facilities
- Client Lounge
- Disabled Facilities
- Flipcharts/White Boards
- Internet/Web Groups
- Office Services
- One-Way Mirror Observation
- Patio
- Reception Area
- Transcription
- Translation
- Web Usability Testing

TECHNOLOGIES

- Audio Recording
- Broadband
- CD Player
- Digital Recording
- DVD Player
- DVD Recording
- FocusVision
- High-Speed Internet
- Laptop Hire
- PC Hire
- Plasma/LCD Flat Screens
- Video Conferencing
- Web Conferencing
- Web Streaming
- Wireless Internet

FACILITY DETAILS

Year Established: 1984

Building Type: Office

Recruiting: Handled off premises

Memberships: AMA, MRA, PMRG, SSP

SERVICES & PRODUCTS

- Qualitative Recruiting
- Quantitative Recruiting
- Medical Recruiting
- Project Management
- L&E HD Video Streaming
- L&E Client Portal

NEARBY LOCATIONS

Hotels

| | |
|-------------------------------|--------------|
| SpringHill by Marriott | 303.705.7300 |
| Embassy Suites by Hilton | 303.592.1000 |
| Fairfield Inn & Suites Denver | 313.455.2995 |
| Element by Westin | 720.614.5555 |

Restaurants

| | |
|---------------------|--------------|
| Ted's Montana Grill | 303.893.0654 |
| Tupelo Honey | 720.274.0650 |
| Ocean Prime | 303.825.3663 |
| Cholon | 303.353.5223 |
| Peak's Lounge | 303.436.1234 |

CONTACT 877.344.1574 | bidrequest@leresearch.com

Charlotte • Cincinnati • Columbus • Denver • New York City • Raleigh • Tampa

LOCATION OVERVIEW DENVER, COLORADO

1614 15th Street, Suite #100 Denver, CO, 80202

FACILITY PHOTOS



Lobby



Pikes Peak Viewing Room



Pikes Peak Focus Room



Breckenridge Viewing Room



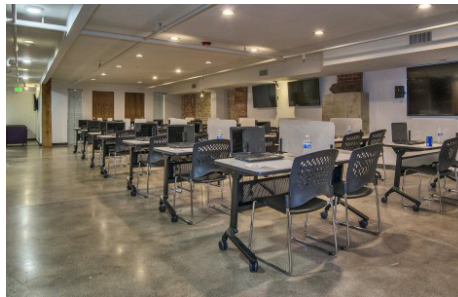
Breckenridge Focus Room



Vail Focus Room



Sensory Test Kitchen



Sensory Room

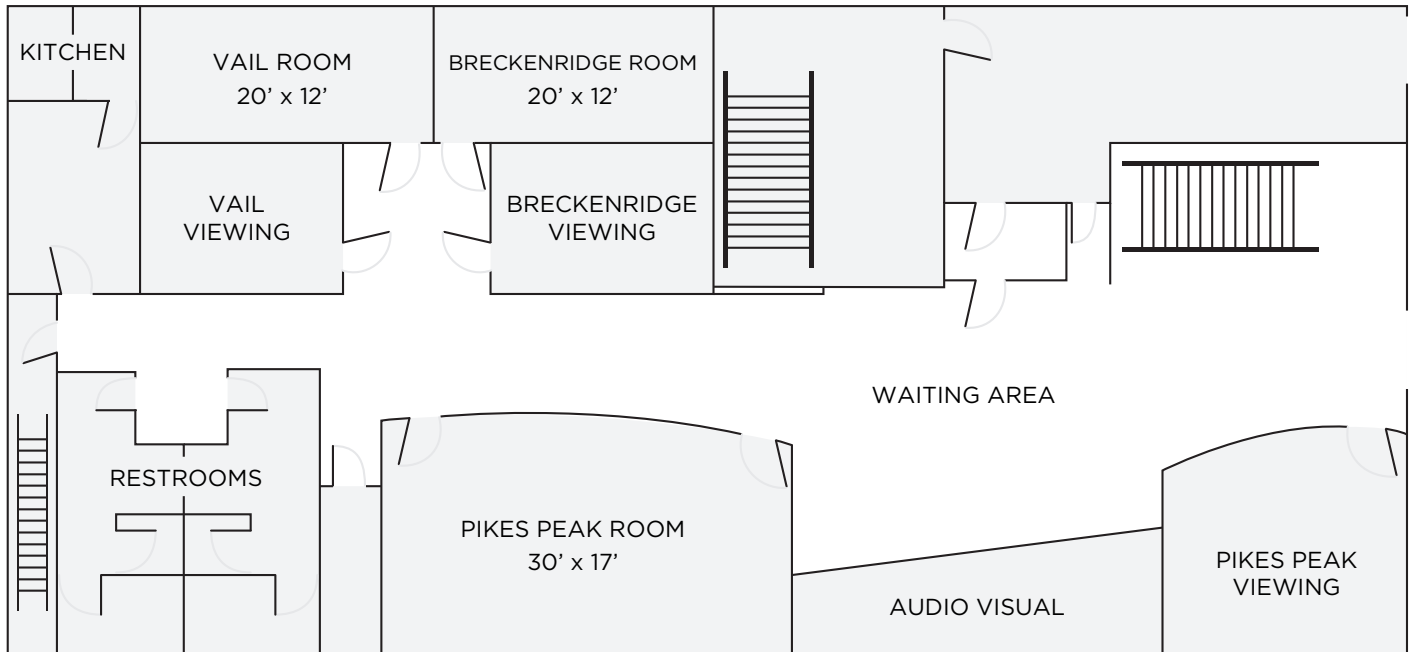
LOCATION OVERVIEW

DENVER, COLORADO

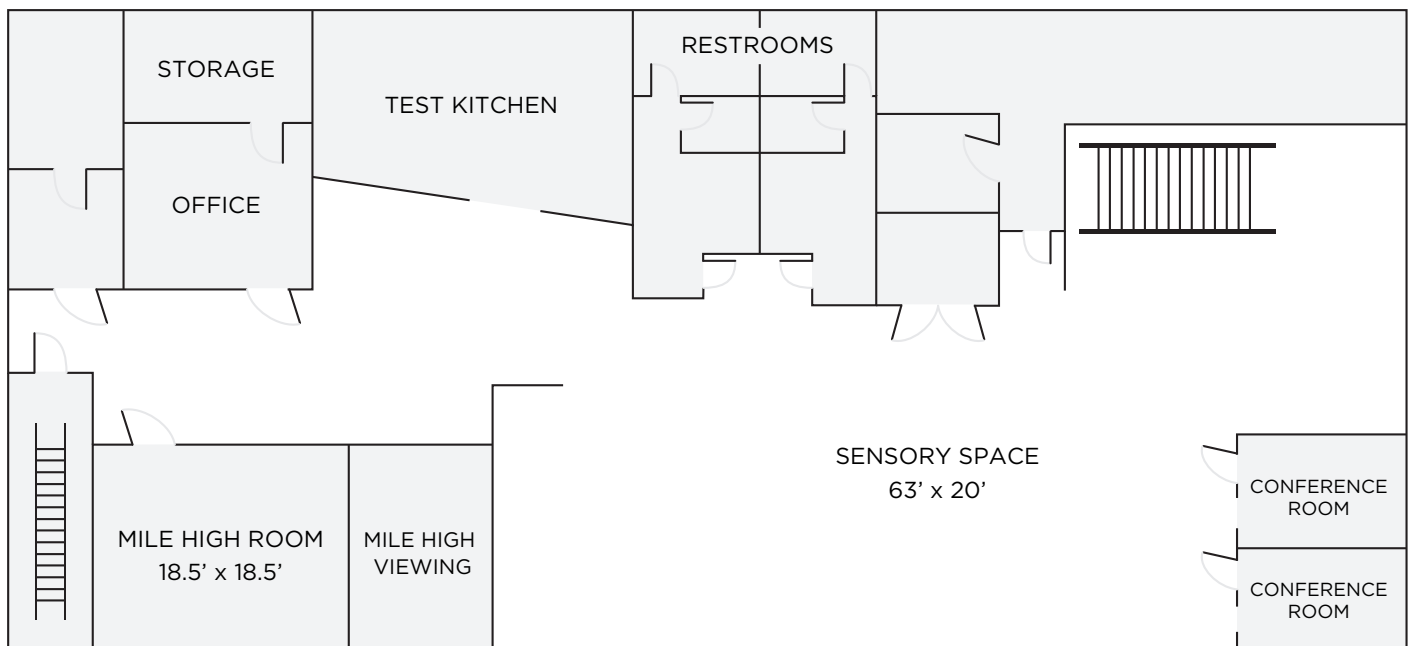
1614 15th Street, Suite #100 Denver, CO, 80202

FLOOR PLAN

MAIN LEVEL



LOWER LEVEL



CONTACT 877.344.1574 | bidrequest@leresearch.com

Charlotte • Cincinnati • Columbus • Denver • New York City • Raleigh • Tampa